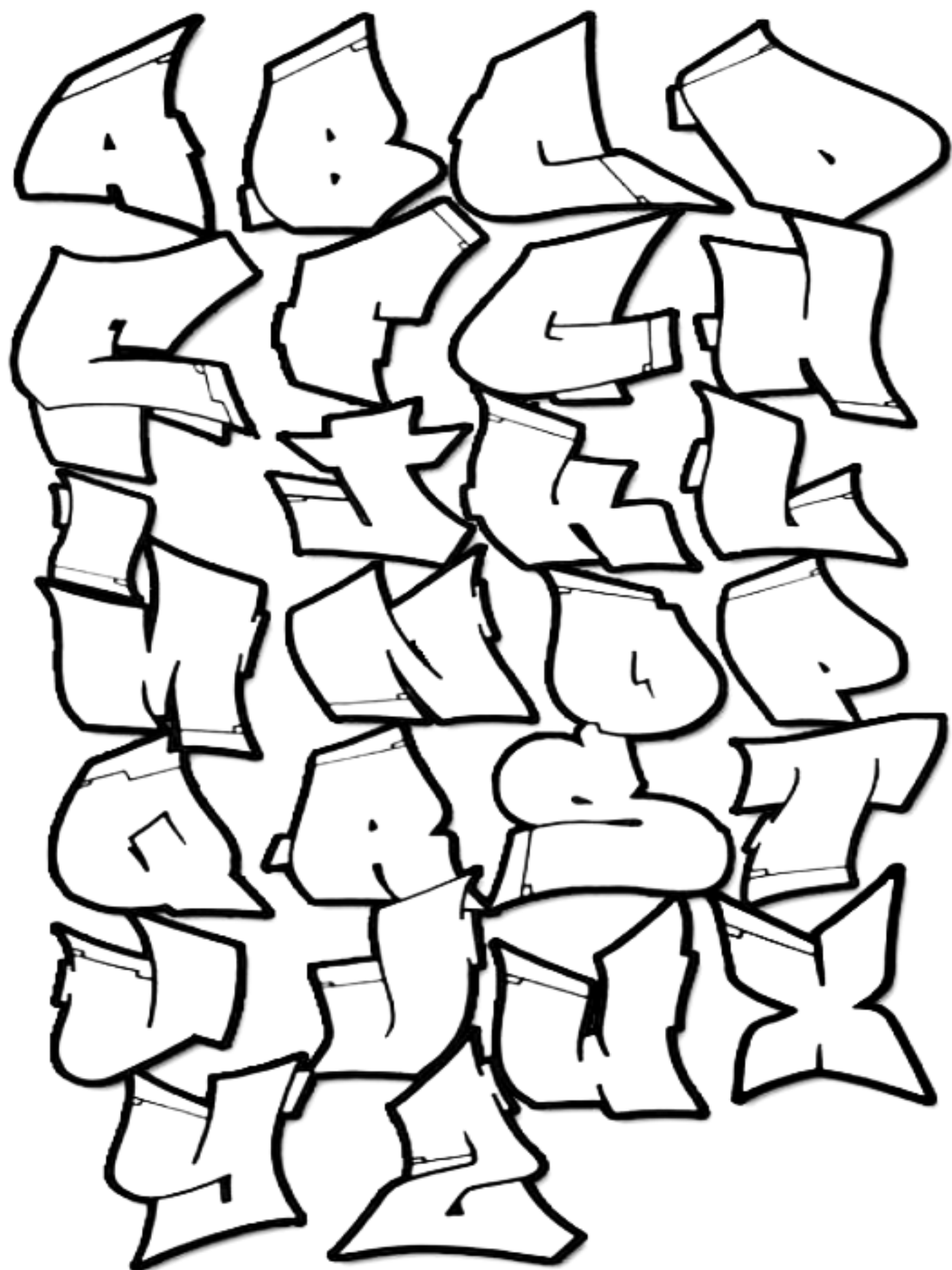


A B C D E
F G H I J
K L M N O P
Q R S T U
V W X Y Z



心 忠 女 心
天 安 女 心
出 心 心 心
心 心 心 心
心 心 心 心
心 心 心 心
心 心

HOW TO DRAW A GRAFFITI TAG LETTER

by © Graffiti Diplomacy

Start out with a basic Roman letter "A". Draw the letter again, changing it just a little. Draw it over and over. Think about the feeling you want the letter to express. Use large, sweeping movements, or sharp angular strokes. Lean the letter a bit to the right or left. Exaggerate the lines. Use as many steps as you want. With time you will begin to notice that your writing starts to flow from your pen. When that happens, that's your tag letter. There is no right or wrong way to draw a tag letter: this is just one variation.



STEP 1.
Draw a basic Roman letter "A".



STEP 2.
Redraw the letter. Only this time lean the letter slightly and flair out the bottom, right stroke. You can trace the letter on a clean sheet of paper if you like. Just be sure to change it a little.



STEP 3.
Draw it again. Add a small extension (serif) on the bottom, left stroke. Curve the crossbar slightly.



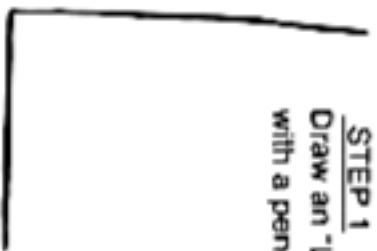
STEP 4.
Continue to redraw the letter. Make the extension on the bottom, left longer. Make the crossbar wider. Flair out the bottom right stroke more. Draw the letter quickly and try to exaggerate the lines.



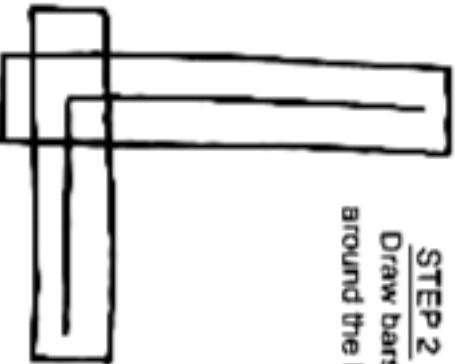
STEP 5.
Redraw the letter again. Use sweeping movements as you draw. Lean the letter over more. Really exaggerate all the strokes. Draw it as many times as you want until it starts to flow from your pen. This is your finished tag letter "A".

This is an excerpt from our new book "Why Write When You Can Tag". Go to our website @ graffitidiplomacy.com for more free drawing lessons and free printable coloring pages.

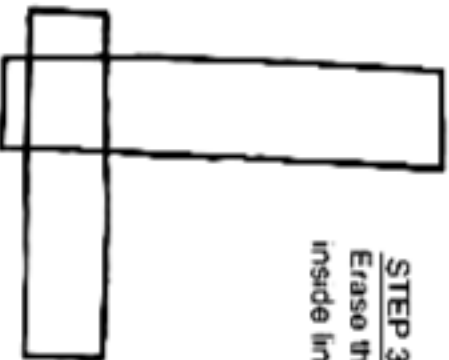
STEP 1
Draw an "L" with a pencil.



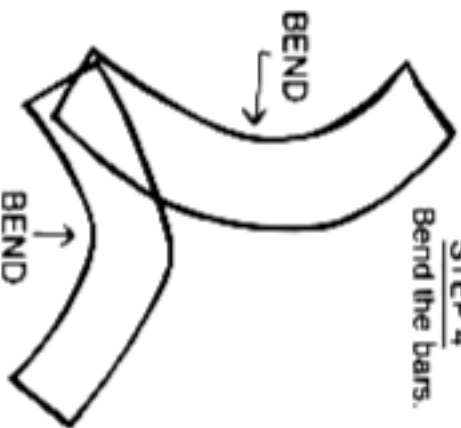
STEP 2
Draw bars around the lines.



STEP 3
Erase the inside lines.



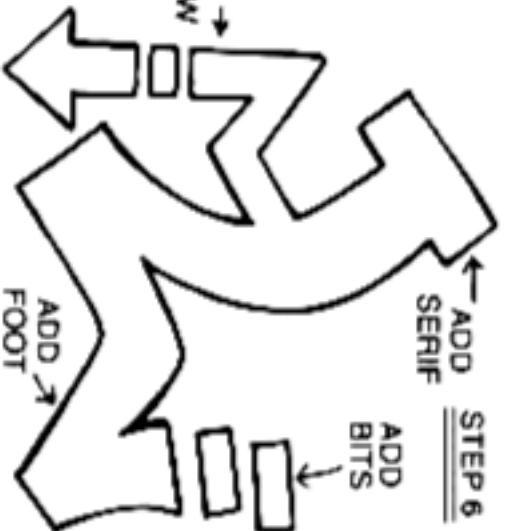
STEP 4
Bend the bars.



STEP 5
Draw around the outline and erase the inside lines.



STEP 6
ADD SERIF



ADD BITS

ADD FOOT